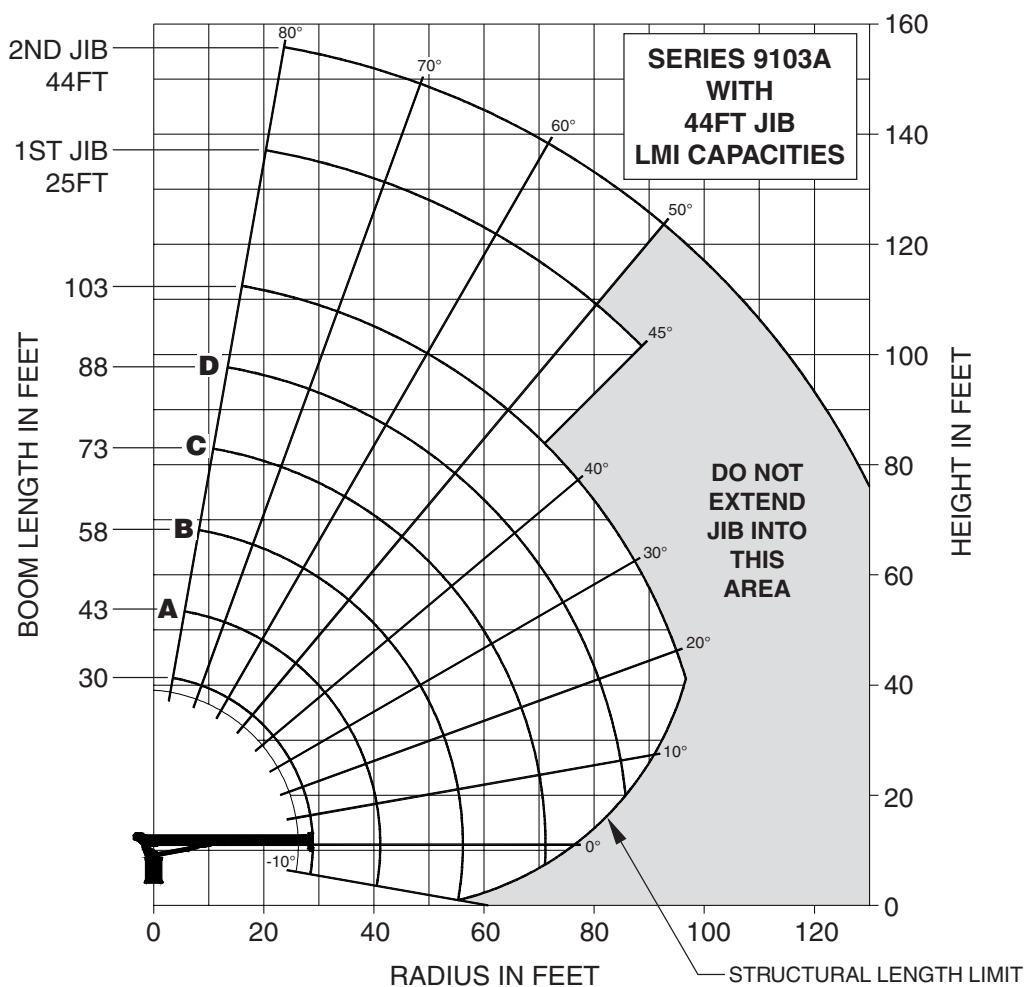


NATIONAL CRANE CORPORATION



NOTE:

1. Operate with jib by radius when main boom is fully extended. If necessary increase boom angle to maintain loaded radius.
2. Operate with jib by boom angle when main boom is not fully extended. Do not exceed rated jib capacities at any reduced boom lengths.
3. Rated loads do not exceed 75% of tipping loads as determined by SAE J765.
4. Shaded areas are structurally limited capacities.

LMI OPERATING CODE SWITCH	
SWITCH POSITION	OPERATING MODE
01	MAIN BOOM - NO JIB STOWED
02	MAIN BOOM - JIB STOWED
03	25 FT TELE JIB
04	44 FT TELE JIB
11	MAN BASKET ON MAIN BOOM
12	MAN BASKET ON 25 FT TELE JIB
13	MAN BASKET ON 44 FT TELE JIB

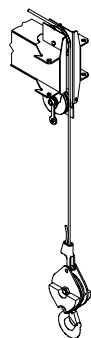
LOAD RATINGS

LOAD RADIUS (FEET)	LOADED BOOM ANGLE	30FT BOOM (lb)	LOADED BOOM ANGLE	A 43FT BOOM (lb)	LOADED BOOM ANGLE	B 58FT BOOM (lb)	LOADED BOOM ANGLE	C 73FT BOOM (lb)	LOADED BOOM ANGLE	D 88FT BOOM (lb)	LOADED BOOM ANGLE	103FT BOOM (lb)	LOAD RADIUS (FEET)	LOADED BOOM ANGLE	25FT JIB (lb)	LOADED BOOM ANGLE	44FT JIB (lb)
5	78.5	52,000											30	76.5	3,950		
8	72.5	34,850											35	74.5	3,450	76.5	2,550
10	68.5	29,050	75.5	26,400	80	24,950							40	72	3,050	75	2,500
12	64.5	24,750	72.5	22,500	78	21,250							45	70	2,600	73	2,450
14	60	21,250	69.5	19,600	76	19,350	79.5	17,750					50	67.5	2,250	71	2,250
16	55.5	18,950	67	17,300	74	16,350	78	15,350	80	14,300			55	65	1,950	69	1,850
20	45	14,350	60.5	14,000	69	13,750	74	12,650	77.5	11,700	80	10,550	60	62.5	1,800	67	1,650
25			52	10,800	63.5	10,550	70	10,150	74	9,400	77	9,100	65	60	1,550	64.5	1,350
30			42.5	8,500	57.5	8,500	65.5	8,350	70.5	7,750	74.5	7,150	70	57.5	1,300	62.5	1,200
35			32.5	6,500	52.5	6,900	62	6,800	67.5	6,400	71.5	6,050	75	54.5	1,100	60	1,050
40					45.5	5,650	57	5,600	64	5,450	68.5	5,150	80	51.5	900	58	950
45					38	4,500	52	4,700	60	4,600	65.5	4,500	85	48.5	700	55.5	900
50					28	3,450	46.5	3,950	56	3,950	62	3,900	90	45.5	450	53	750
55							40.5	3,150	52	3,300	59	3,350	95			50.5	600
60							34	2,550	47.5	2,750	55.5	2,900					
65									42.5	2,200	52	2,450					
70									37.5	1,750	48	2,050					
75									31	1,350	44	1,650					
80											39.5	1,250					
85											34.5	900					
0		4,500	0	2,200	0	800											
ADD TO CAPACITIES WHEN NO JIB STOWED (lb)		850		600		450		350		300		250					

LOADLINE EQUIPMENT DEDUCT (lb)

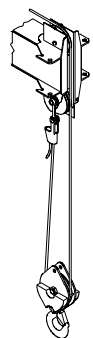
- Downhaul weight _____ 150
- One sheave block _____ 305
- Two sheave block _____ 355
- Three sheave block _____ 575

1 PART LINE



MAX. PULL
7,700 lb

2 PART LINE



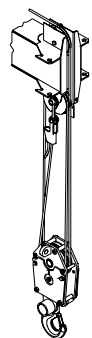
MAX. PULL
15,400 lb

3 PART LINE



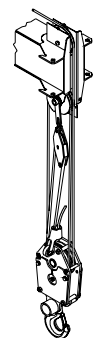
MAX. PULL
23,100 lb

4 PART LINE



MAX. PULL
30,800 lb

5 PART LINE



MAX. PULL
38,500 lb

6 PART LINE



MAX. PULL
46,200 lb

7 PART LINE



MAX. PULL
52,000 lb

NOTICE

- Do not deadhead line block against boom tip when extending boom.
- Keep at least 3 wraps of loadline on drum at all times.
- Use only 9/16" diameter rotation resistant cable with 38,500 lb breaking strength on this machine.
- Maximum capacity with "burst of speed" is 3,000 lb.