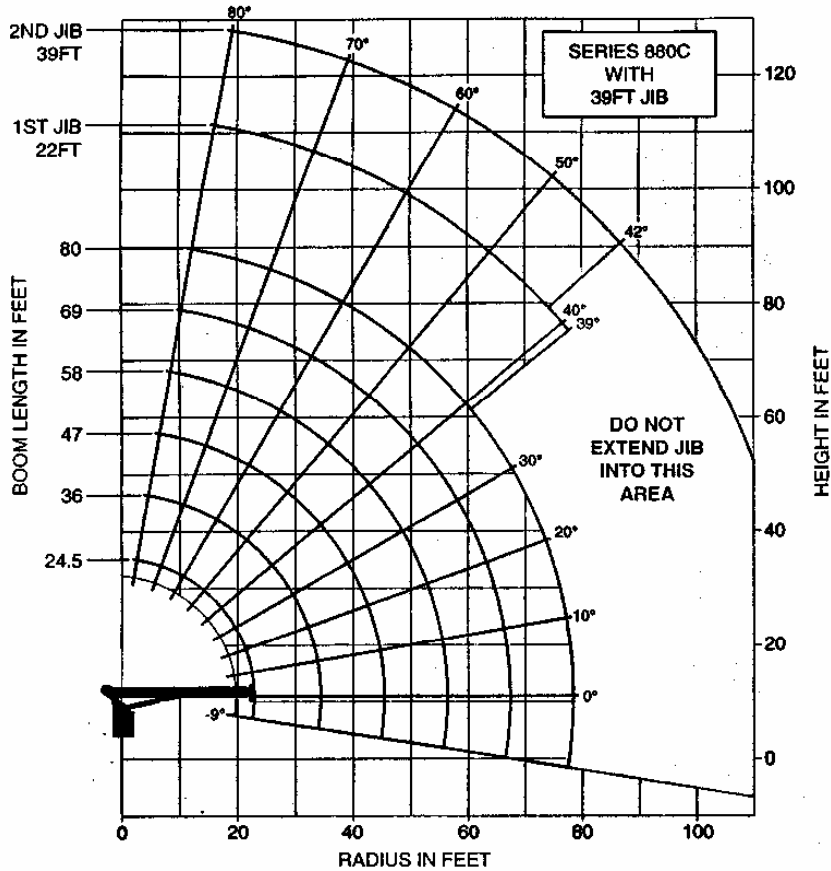


NATIONAL CRANE CORPORATION



NOTE:

1. Operate with jib by radius when main boom is fully extended. If necessary increase boom angle to maintain loaded radius.
2. Operate with jib by boom angle when main boom is not fully extended. Do not exceed rated jib capacities at any reduced boom lengths.

LOADLINE EQUIPMENT DEDUCT (lb)

Downhaul weight	_____	150
One sheave block	_____	200
Two sheave block	_____	355
Three sheave block	_____	530

LOAD RADIUS (FEET)	LOADED BOOM ANGLE	24.5FT BOOM (lb)	LOADED BOOM ANGLE	36FT BOOM (lb)	LOADED BOOM ANGLE	47FT BOOM (lb)	LOADED BOOM ANGLE	58FT BOOM (lb)	LOADED BOOM ANGLE	69FT BOOM (lb)	LOADED BOOM ANGLE	80FT BOOM (lb)
5	77.5	42,000										
8	70	29,200										
10	64.5	24,200	73.5	22,200	78	20,600						
12	58.5	20,900	70	19,000	75.5	17,500	78.5	16,200				
14	52.5	18,200	66.5	16,600	73	15,300	76.5	14,100	79.5	13,200		
16	46	15,900	63	14,700	70	13,500	74.5	12,500	77.5	11,700	79.5	11,300
20	29	12,200	55	11,900	64.5	11,000	70	10,100	74	9,600	76.5	9,100
25			44	9,500	57.5	8,900	65	8,200	69.5	7,600	72.5	7,200
30			31	7,400	50	7,300	59	6,700	65	6,300	68.5	5,950
35					41	6,100	53	5,700	60	5,400	64.5	5,000
40					30	4,900	46.5	4,800	55	4,600	60.5	4,300
45							38.5	4,100	49.5	4,000	56.5	3,750
50							29	3,300	43.5	3,400	52	3,250
55							13	2,200	37	2,900	47	2,800
60									29	2,400	41.5	2,400
65									17	1,700	35.5	2,000
70											28	1,600
75											18	1,100

LOAD RADIUS (FEET)	LOADED BOOM ANGLE	22FT JIB (lb)	LOADED BOOM ANGLE	39FT JIB (lb)
20	79	5,600		
25	76.5	4,900	79	3,350
30	73.5	4,300	76.5	3,000
35	70.5	3,650	74.5	2,650
40	67.5	3,100	72	2,400
45	64	2,600	69	2,200
50	61	2,200	67	2,000
55	58	1,900	64	1,800
60	54.5	1,600	61.5	1,600
65	51	1,350	59	1,400
70	47	1,100	55	1,200
75	43.5	850	52.5	1,000
80	39	650	49.5	850
85			46	700
90			42	550

1 PART LINE	2 PART LINE	3 PART LINE	4 PART LINE	5 PART LINE	6 PART LINE
MAX. PULL 7,700 lb	MAX. PULL 15,400 lb	MAX. PULL 23,100 lb	MAX. PULL 30,800 lb	MAX. PULL 38,500 lb	MAX. PULL 42,000 lb

NOTICE

- Do not deadhead line block against boom tip when extending boom.
- Keep at least 3 wraps of loadline on drum at all times.
- Use only 9/16" diameter rotation resistant cable with 38,500 lb breaking strength on this machine.
- Maximum capacity with "burst of speed" is 3,000 lb.